

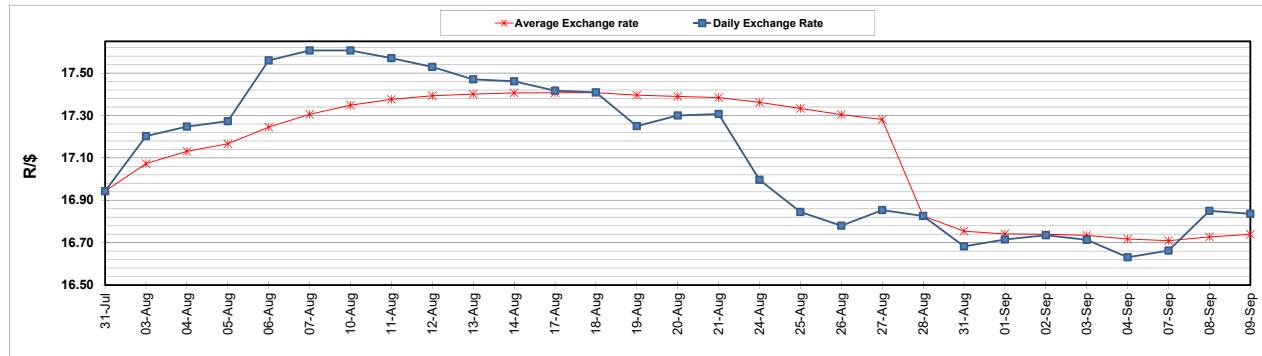
	PETROL 95 ULP	PETROL 93 ULP & LRP	DIESEL 0.05%	DIESEL 0.005%	ILL. PAR.
GAUTENG PUMP PRICE (SA c/l) AS FROM 02/09/2020	1,518.000	1,489.000	-	-	-
WHOLESALE PRICE (SA c/l) AS FROM 02/09/2020	-	-	1,327.560	1,331.960	716.828
SINGLE NATIONAL MAXIMUM RETAIL PRICE	-	-	-	-	899.000
BASIC FUEL PRICE - 09/09/2020 (SA c/l)	512.235	501.187	470.101	471.509	411.620
PRESS RELEASE CONTRIBUTION TO BFP 02/09/2020 - 09/09/2020 (SA c/l)	565.470	546.470	576.630	581.030	512.128
UNIT OVER/(UNDER) RECOVERY - 09/09/2020 (SA c/l)	53.235	45.283	106.529	109.521	100.508
AVERAGE BASIC FUEL PRICE 28/08/2020 - 09/09/2020	537.296	528.470	506.473	508.686	443.292
AVERAGE UNIT OVER/(UNDER) RECOVERY 28/08/2020 - 09/09/2020	29.607	19.433	77.157	79.344	77.502

ANALYSIS MOVEMENT OF AVERAGE OVER/(UNDER) RECOVERY

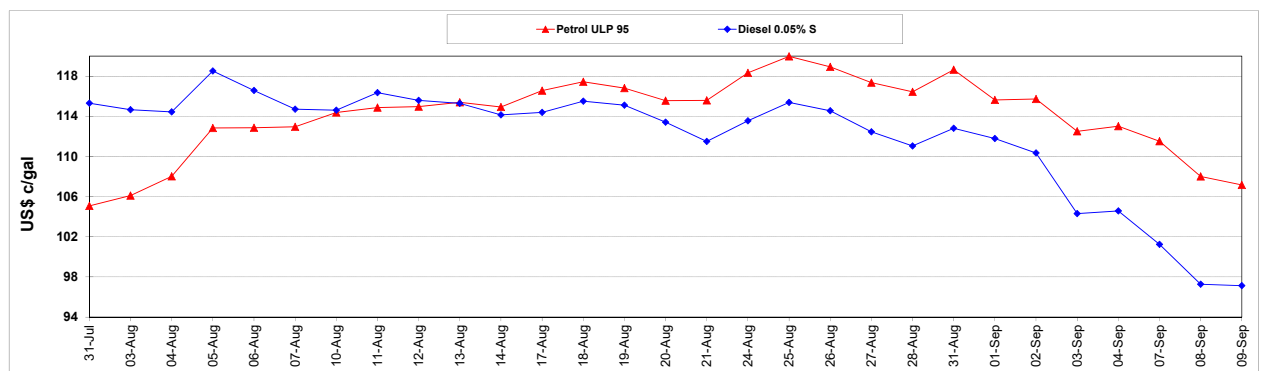
	PETROL 95	PETROL 93	DIESEL 0.05%	DIESEL 0.005%	ILL. PAR.
- MOVEMENT IN INTERNATIONAL PRODUCT PRICES	12.197	2.309	60.746	62.861	63.139
- MOVEMENT IN EXCHANGE RATE	17.410	17.124	16.411	16.483	14.364
AVERAGE UNIT OVER/(UNDER) RECOVERY 28/08/2020 - 09/09/2020	29.607	19.433	77.157	79.344	77.502

R/\$ EXCHANGE RATE - (R/\$16.8360 - 09/09/2020)

EXCHANGE RATE USED IN BASIC FUEL PRICE



INTERNATIONAL PRODUCT PRICES OF BASKET USED IN BASIC FUEL PRICE



BASIC FUEL PRICE IN SA CENTS PER LITRE

